

LifeFocus

FALL 2018

Montcalm Community College

CAREER DEVELOPMENT & PERSONAL ENRICHMENT COURSES

Intramural Sports

Coed Basketball
page 35

Introduction to Biblical Greek

Explore the Greek alphabet, introductory vocabulary and basic structure
page 23



Montcalm Community College

WHAT'S INSIDE?

4	COURT-APPOINTED SPECIAL ADVOCATES	15	CULTURE/TRAVEL
6-7	ADVANCED MANUFACTURING Automation FANUC	17	HOBBIES
7-9	ARTS	18	ARTS & CULTURAL EVENTS AT MCC
9-10	BUSINESS AND PERSONAL SKILLS	19	HOME/FAMILY
11-13	COMPUTER & INTERNET SKILLS Computer Skills – Professional Development	20-22	HEALTH CARE
14-15	LUNCH AND LEARN	23	LANGUAGES
		24	MUSIC
		25	TECHNOLOGY
		26	SCECH FOR TEACHERS



MCC'S CONTINUING EDUCATION REFUND POLICY

Students receive a full refund for all courses and workshops cancelled by the college.

A full refund is given to students who officially drop a course by 5 p.m. one business day prior to the first class meeting. Failure to attend does not constitute an official drop and no refunds will be granted.

Students enrolling in *Education To Go* online courses have one week after the start date to drop the course for a full refund. MCC will enforce all other online and contracted companies' refund policies. Any special refund policies are clearly stated in the course descriptions.

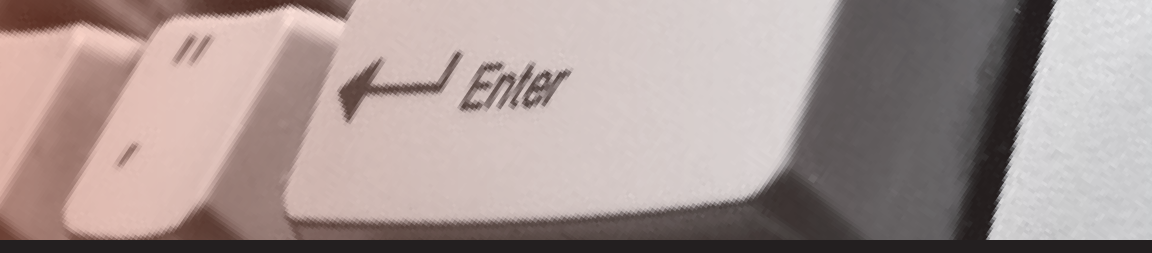
All refunds are mailed to the address supplied at the time of enrollment. Processing takes at least two weeks.

Some images were provided by PhotoSpin at www.photospin.com.

Montcalm Community College is accredited by the Higher Learning Commission (hlcommission.org), a regional accreditation agency recognized by the U.S. Department of Education.

2 Life Focus

CALL 989-328-1012 FOR MORE INFORMATION



27	TEST PREPARATION	34-35	MCC RECREATION & FITNESS CENTER
28	KIDS' COLLEGE Art Health Care	36	RECREATION FEES & PASSES
29	PROFESSIONAL DEVELOPMENT FOR PARAPROFESSIONALS & TEACHERS	37	REGISTRATION
30-31	NATURE TRAILS ACTIVITIES	37	"EDUCATION TO GO" COURSES
32-33	FITNESS & RECREATION	38	LOCATIONS
		39	REGISTRATION FORM

WHAT ARE YOU INTERESTED IN?

Is there a career and personal development noncredit class you would like us to offer? Are you interested in teaching a noncredit class for us? If so, please let us know.

Visit www.montcalm.edu/career-development to complete a brief online form and submit it to us.



HALLOWEEN AT HERITAGE VILLAGE

Halloween at Heritage Village is Oct. 27 from 4 to 6 p.m. at Montcalm Heritage Village on Montcalm Community College's Sidney campus. Everyone is invited to dress for the holiday and enjoy a hayride, beverages, snacks and trick-or-treating throughout the village. The event is free and open to the public.



COURT-APPOINTED SPECIAL ADVOCATES (CASA)

New Volunteer Training Course

Taught by Montcalm CASA Staff. The course is free.

Have you ever wanted to help an abused or neglected child? The Montcalm CASA program seeks volunteers who will stand up for an abused or neglected child in Montcalm County. This eight-week course will provide specialized training to transform everyday concerned citizens into official court appointed advocates who will become a voice for a child in the court system.

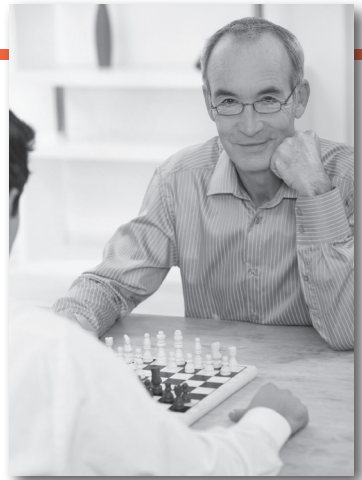
Volunteers will be sworn in during a ceremony at the

Montcalm County Juvenile Court upon completing the program. Children who are appointed a CASA volunteer often have higher self-esteem, more academic success, more stability in foster care, better connections to services and a greater rate in achieving a safe and permanent home. CASA volunteers give hope to children and often the fulfillment they receive in return is beyond anything they ever would have expected.

Apply now to be screened and selected for the training beginning soon. To find the application and more information, please visit www.montcalmcasa.org, call (989) 831-3561 or email montcalmcasa@8cap.org.

JOIN THE CALL TO NATIONAL SERVICE

Senior volunteers are needed for the EightCAP Foster Grandparent and Senior Companion Programs. People ages 55 and older are welcome to apply to serve their community and earn extra cash. Volunteers serve an average of 15 hours per week and will earn an hourly tax-free stipend, transportation reimbursement, training, recognition and many other benefits. **Foster Grandparents** serve in schools, daycares and Head Start centers and help children maintain or improve their self-esteem by mentoring, tutoring or assisting them throughout the day. **Senior Companions** serve their elderly neighbors and help them continue to live independently by visiting weekly to provide companionship and socialization.



For more information, please call (616) 754-9315.

4 Life Focus

EASY ONLINE REGISTRATION! →



Citizen's Academy – Montcalm County

Taught by the Montcalm County Sheriff's Office and the Michigan State Police Lakeview Post. The course is free.

This eight-week academy gives citizens the opportunity to become familiar with the mission and operation of the MCSO and MSP, understand the procedures deputies and troopers follow, increase their awareness of law enforcement's role in the community and get to know personnel at the MCSO and MSP Lakeview Post. A graduation ceremony will take place Nov. 6 at 7 p.m. Individuals who are interested in attending the Citizen's Academy should contact Montcalm County Sheriff Mike Williams at (989) 831-7596 or mwilliams@montcalm.us or F/Lt Kevin Sweeney at (517) 719-1195 or sweeneyk@michigan.gov to receive an application.

Tues, Sept. 18-Nov. 6, 6-8 p.m.
Montcalm Community College, Sidney

Citizen's Academy – Ionia County

Taught by the Ionia County Sheriff's Office and the Michigan State Police Lakeview Post. The course is free.

This eight-week academy will give citizens the opportunity to become familiar with the mission and operation of the ICSO and MSP, understand the procedures deputies and troopers follow, increase their awareness of law enforcement's role in the community, and get to know personnel at the ICSO and MSP Lakeview Post. A graduation ceremony will take place Nov. 6 at 7 p.m. Individuals who are interested in attending the Citizen's Academy should contact Ionia County Sheriff Dale Miller at (616) 527-5737 or dmiller@ioniacounty.org, or F/Lt Kevin Sweeney at (517) 719-1195 or sweeneyk@michigan.gov to receive an application.

Wed, Sept. 19-Nov. 14, 6-8 p.m.
Ionia County Intermediate School District, Ionia



Fall 2018 5



ADVANCED MANUFACTURING

Automation

Introduction to Ladder Logic – Hybrid

Taught by Tim Rogers. The cost is \$499.

Learn basic ladder logic programming using ladder diagrams and basic electrical controls. Students will be required to meet in the classroom on Sept. 28 and Nov. 9 from 7 to 11 a.m. The remainder of the class will include online learning and in-person demonstration of skills as arranged by students and the instructor. The skill demonstration will take place at a time arranged with the instructor. The required course material is available at the MCC Bookstore or online at www.montcalm.edu/bookstore.

XIND 230 01

Sept. 28-Nov. 9 (Meet in person on Sept. 28 & Nov. 9, 7–11 a.m.)

G227/Braman Center in Greenville

RSLogix PLC Programming – Hybrid

Taught by Tim Rogers. The cost is \$499.

This course will emphasize programmable logic controllers (PLC), their use, selection, setup and servicing. It is designed to give the industrial technician/electrician an intermediate understanding of the Allen Bradley Compact Logix PLC using RSLogix 5000 software. Students should have a basic understanding of ladder diagrams and electrical controls before taking this course. Students will be required to meet in the classroom on Nov. 9 and Dec. 21 from noon to 4 p.m. The remainder of the class will include online learning and in-person demonstration of skills as arranged by the

students and instructor. The required course material is available at the MCC Bookstore or online at www.montcalm.edu/bookstore.

XIND 231 01

Nov. 9-Dec. 21 (Meet in person on Nov. 9 and Dec. 21, Noon-4 p.m.)

G227/Braman Center in Greenville

KUKA KORE Basic

Taught by Tim Rogers. The cost is \$1,200.

KORE basic modules cover an introduction to robotics, fields of application for an industrial robot, overview of components of a robot system, robot controller, moving the robot, start up and executing robot programs, working with program files, creating and modifying programmed motions, using logic-functions in the robot program and a final programming assignment. The course fee includes the KUKA KORE basic training manual. Students who pass the final exam will receive a KUKA KORE Basic certificate.

XIND 247 01

Fri, Aug. 31-Sept. 21, 7 a.m.-3:30 p.m.

G227/Braman Center in Greenville

FANUC

MCC collaborates with FANUC to support their goal of “Partnering with Education” to help meet the growing demand for the skilled workforce needed in all aspects of today’s manufacturing. A FANUC-certified instructor conducts all training at MCC, and is committed to quality teaching and providing the best learning experience. MCC’s lab is equipped with several FANUC industrial robots and classroom computers have FANUC Robotics ROBOGUIDE simulation software available for students to practice.



FANUC – Handling Tool Operation and Programming

Taught by Tim Rogers. The cost is \$1,300.

Learn the tasks that an operator, technician, engineer or programmer needs to set up and program a FANUC Robotics Handling Tool Software Package. Learn to operate the teach pendant, navigate the controller software, power up and jog the robot, perform all jog methods, recover from common program and robot faults, execute production operations, understand all programming instructions, understand all positional information, understand all motion joints and create and execute MACROS. The course fee includes the FANUC training manual.

XIND 240 01

Fri, Sept. 28- Oct. 19, 7 a.m.-3:30 p.m.
G227/Braman Center in Greenville

FANUC iRVision

Taught by Tim Rogers. The cost is \$1,200.

Learn the basic tasks and procedures required for an operator, technician, engineer or programmer to set up, teach, test and modify iRVision applications. Learn to identify the components of a vision system, install vision hardware, develop an application, program the robot, perform error recovery procedures and follow recommended safety practices. The course fee includes the FANUC training manual.

XIND 245 01

Fri, Oct. 26 & Nov. 2, 7 a.m.-3:30 p.m.
G227/Braman Center in Greenville

FANUC Operations

Taught by Tim Rogers. The cost is \$880.

Learn to power up and jog the robot, recover from common program and robot faults and execute production operations. Also learn to create, modify and execute the teach pendant program, and backup and restore individual programs and files. The course fee includes the FANUC training manual.

XIND 241 01

Thur & Fri, Aug. 23 & 24, 7 a.m.-3:30 p.m.
G227/Braman Center in Greenville

ARTS

Beginning Welding Art

Taught by Caleb Daggett. The cost is \$299.

Have you always been curious about metal art and wondered if it was for you? In this beginning level class, your instructor will provide three options for a project. After you've determined your project design, you'll begin by observing and then, with your instructor's guidance and supervision, you'll experience each step in the metal forming process: bending, cutting, welding and grinding. Supplies for one project are included in the cost of the class. NOTE: If you wish to build a second sculpture, you will work with your instructor to determine the cost and source of additional materials. You will need to provide your own gloves, welding jacket and welding helmet.

XWEL 170 01

Mon, Sept. 10-Oct. 8, 6-9 p.m.
G224/Braman Center in Greenville

Introduction to Digital Arts as a Medium

The cost is \$299.

Societies flourish when their citizens engage in meaningful conversations in public forums. This course will discuss art, history and aesthetical theory, along with other important ideas that shape the human experience as it pertains to the visual communications of digital arts as a medium. This course runs concurrently with the credit course DART 101. The required text is available at the MCC Bookstore or online at www.montcalm.edu/bookstore.

XART 130 01

Tues, Aug. 28-Dec. 11, 6-8 p.m.
N104/Instruction North in Sidney

ARTS

continued

Photographic Foundations

The cost is \$299.

Through a combination of lectures, photographic assignments and critiques, students will learn to see photographically through an exploration of the basic tools and techniques of digital photography. Through manual controls and RAW capture, students will learn the craft of making photographs while being introduced to photo editing software. Emphasis will be placed on critical issues that pertain to contemporary commercial photography. This course runs concurrently with the credit course DART 110. The required text is available at the MCC Bookstore or online at www.montcalm.edu/bookstore.

XART 135 01

Mon, Aug. 27-Dec. 10, Noon-2 p.m.
N104/Instruction North in Sidney

Commercial Design

The cost is \$299.

This course will introduce students to the fundamentals of graphic design. Through a process that involves research, conceptualization and synthesis of ideas, students will understand the elements and principles of design, creative and expressive typography, page layout and the manipulation of digital images through various mediums. Emphasis will be given to the importance of presentation and craftsmanship as it pertains to practical application of the real-world scenarios. This course runs concurrently with the credit course DART 120. The required text is available at the MCC Bookstore or online at www.montcalm.edu/bookstore.

XART 150 01

Thur, Aug. 30-Dec. 13, 6-9 p.m.
N104/Instruction North in Sidney

Digital Imaging

The cost is \$299.

This course will introduce students to the creation, manipulation and critical interpretation of graphic and photographic artwork. Topics covered in the course will include file formats, platform terminology, image layout and basic functions within image editing software. This course builds upon the fundamentals learned from Photographic Foundations. This course runs concurrently with the credit course DART 130. The required text is available at the MCC Bookstore or online at www.montcalm.edu/bookstore.

XART 145 01

Tues, Aug. 28-Dec. 11, Noon-2 p.m.
N104/Instruction North in Sidney

Basic Camera Operations/ Photography

Taught by Seth Sutton. The cost is \$75.

In this hands-on class, learn how to use your camera's settings to improve your photos. Explore framing techniques, tips for controlling light and how aperture, ISO and shutter speed can be manipulated to make your photos more interesting. Your camera, cords and owner's manual are required. This class is geared more toward SLR cameras; however, most cameras will work. Each week you will learn a new set of skills with classroom practice and instruction. You will take these new skills home with a fun photo assignment to be shared the following week.

XCIS 371 01

Sat, Sept. 8-Oct. 13, 9 a.m.-1 p.m.
N104/Instruction North in Sidney

Advanced Camera Operations/Photography

Taught by Seth Sutton. The cost is \$75.

This class is a continuation of the Basic Camera Operations/Photography class. More emphasis will be placed on composition, lighting and use of camera controls. Photo assignments will be a little more challenging with more attention

8 Life Focus

EASY ONLINE REGISTRATION! →



given to subject, light, exposure and effects. You will learn to take advantage of available light without the use of flash and explore long exposure photography. The course also covers basic studio flash equipment with an opportunity to set up a studio and use your own camera with professional studio equipment. This is a great opportunity to bring family members (even the furry ones) to class for a fun photo shoot. It is recommended that you take the basic class prior to this one. This is a fast-paced, hands-on class, with the expectation that you have already learned to use your camera settings.

XCIS 373 01

Sat, Oct. 27-Nov. 17, 9 a.m.-1 p.m.
N104/Instruction North in Sidney

Art Basics

*Taught by Sue Moss. The cost is \$39.
This class is for ages 16 and older.*

Have you always wanted to improve your drawing and painting skills? Many have expressed a desire to become better at their craft. Students will review the basics of drawing and painting, learn sketching techniques, explore color mixing and brush control with acrylic paints and become confident in their abilities. At the end of this four-week class, students will create one final project using the skills learned in previous lessons. Supplies needed: Drawing pencil set; Bristol board/multi media pad size 9x12 inches; set of acrylic paints; fine, medium and broad brushes; and canvas or canvas panel size 11x14 inches.

XART 120 01

Mon, Sept. 10-Oct. 1, 1:30-3:30 p.m.
G111/Ash TLC in Greenville

Gouache “gwosh” Painting

*Taught by Sue Moss. The cost is \$39.
This class is for ages 16 and older.*

Gouache is a rich and vivid opaque watercolor. It is immediate and easy to use. Artists such as Turner and Matisse used gouache. In this class, students will explore how to use this medium in various ways from washes to areas of solid

color. After mastering the fundamentals, students will create several pieces of art combining Gouache with charcoal and pastel. Supplies needed: Set of Gouache paint; watercolor paper; fine line and medium brush; chalk pastels; and a canvas panel size 11x14 inches.

XART 300 01

Mon, Oct. 8-29, 1:30-3:30 p.m.
G111/Ash TLC in Greenville

Painted Bottle Luminary Workshop

Taught by Sue Moss. The cost is \$25.

Painting on glass can be a lot of fun. Participants in this workshop will learn how to create a unique hand painted luminary out of a recycled and repurposed wine bottle just in time for the holidays. All supplies are provided.

XART 201 01

Sat, Nov. 3, 9-11 a.m.
G111/Ash TLC in Greenville

BUSINESS AND PERSONAL SKILLS

Starting a Business

*Presented by Marie Elliott, SBDC Business
Consultant. This course is free, but
pre-registration is required.*

This course is designed for individuals who are considering self-employment, or who may be at the beginning stages of starting a business. Delivered in a workshop format, this introductory session helps aspiring entrepreneurs assess their abilities to lead and manage a company, as well as evaluate market and sales potential for their products/services. Startup costs, financing options and business planning are introduced, along with necessary steps to getting started.

XBUS 113 01

Wed, Sept. 19, 6-8 p.m.
G111/Ash TLC in Greenville



BUSINESS AND PERSONAL SKILLS

continued

Writing a Business Plan

Presented by Marie Elliott, SBDC Business Consultant. This course is free, but pre-registration is required.

Designed for individuals who want to increase their chances for successful self-employment, or business launch, this course covers business planning in detail. Specifics of marketing, finance, legal, regulatory issues, operations, information-based planning and management are key components of this workshop. The first steps for creating a business plan draft are included. Live examples of effective business plans are used as course material.

XBUS 195 01

Wed, Sept. 26, 6-8 p.m.
G111/Ash TLC in Greenville

Show Me the Money

Presented by Marie Elliott, SBDC Business Consultant. This course is free, but pre-registration is required.

This workshop is designed for individuals who are seeking financing to start or grow their small business. Delivered in a workshop format, this session helps entrepreneurs understand the different sources of funding available, the requirements to obtain financing, credit scores and myths/facts about grants.

XBUS 150 01

Wed, Oct. 3, 6-8 p.m.
G111/Ash TLC in Greenville

Small Business, Big Threat – Cybersecurity Awareness

Presented by Marie Elliott, SBDC Business Consultant. This course is free, but pre-registration is required.

Even small businesses are at risk of cyber-attacks. In fact, small business is more vulnerable in many ways. This workshop is designed for small business owners (no technology background assumed) who have completed the Cybersecurity Assessment provided by the Michigan Small Business Development Center (MI-SBDC) to determine if their company is at risk. The assessment is designed as an interactive learning tool that increases your understanding and preparation for managing your business security risk. It may take 45 to 60 minutes to complete and includes multiple perspectives that can help you understand — and ultimately reduce — your vulnerability as a small business. This timely discussion includes the most common areas for concern and action for small business owners: cybersecurity practices, protecting your company information, what to do if your company has been breached, password practices, physical security, buying and selling online, physical security and mobile security. The link to the Cybersecurity Assessment is www.smallbusinessbigthreat.com.

XBUS 430 01

Wed, Oct. 10, 6-8 p.m.
G111/Ash TLC in Greenville

Getting Paid to Talk: Making Money with Your Voice

Taught by Voice Coaches. The cost is \$19.

Explore numerous aspects of voice-over work for television, film, radio, audiobooks, documentaries and the Internet in your area.

XCOM 126 01

Tues, Oct. 9, 6:30-9 p.m.
P101/Panhandle Area Center in Howard City



COMPUTER & INTERNET SKILLS

Computers for Absolute Beginners-Part I

Taught by Mary Palmer. The cost is \$49.

Learn to use computers, Windows 8, the Internet, email and word processing in a slow-paced course created for novice and senior users.

XCIS 174 01

Mon, Sept. 10-Oct. 1, 1:45-4:45 p.m.

G112/Ash TLC in Greenville

XCIS 174 02

Mon, Oct. 22- Nov. 12, 3-6 p.m.

D309/Beatrice E. Doser Building in Sidney

Using Social Media

Taught by Mary Palmer. The cost is \$39.

Learn how to use different types of social media in this hands-on course. Facebook, Instagram, Twitter, Snapchat and Pinterest will be reviewed during the course.

XCIS 350 01

Tues, Nov. 13, 3-5 p.m.

G112/Ash TLC in Greenville

Computer Skills — Professional Development

Facebook for Business

Taught by Mary Palmer. The cost is \$49.

Facebook is a powerful, free or inexpensive way to promote your business. Learn the many ways that you can use this versatile platform to get the word out to existing or potential customers. Lunch is included.

XBUS 125 01

Tues, Oct. 2, 9 a.m.-1 p.m.

G112/Ash TLC in Greenville

Selling on eBay

Taught by Mary Palmer. The cost is \$39.

Learn how to create a listing that will attract

attention and sell your item. Discover ways to minimize shipping costs, safe payment methods and how to protect yourself as a seller. Bring a charged smartphone or tablet and an item to sell.

XCIS 198 01

Tues, Sept. 11, 3-7 p.m.

D317/Beatrice E. Doser Building in Sidney

XCIS 198 02

Thur, Dec. 6, 5-9 p.m.

G113/Ash TLC in Greenville

CISCO Certification

MCC's Cisco Networking Academy provides hands on and theoretical knowledge of networking, digital communications, microprocessor systems and real-time software for control applications. Students will gain experience in Cisco Networking and are eligible to sit for industry recognized certifications upon the completion of each set of courses.

Networking Fundamentals

The cost is \$375.

This course introduces students to the architecture, structure, functions, components and models of the Internet and other computer networks. The principles and structure of IP addressing and the fundamentals of Ethernet concepts, media and operations are introduced. Students will be able to build simple LANs, perform basic configurations for routers and switches and implement IP addressing schemes. Lab work is designed to simulate real-world networking. This course is the first of four networking courses to prepare students for the Cisco Certified Network Associate (CCNA) certification exam. This hybrid course meets concurrently with the credit course, CNET 151 and requires some online coursework. The required text is available at the MCC Bookstore or online at www.montcalm.edu/bookstore.

XCIS 127 01

Mon, Aug. 27-Oct. 22, 5-9 p.m.

G100/Ash TLC in Greenville

Fall 2018 11

Computer Skills — Professional Development

continued

Routing & Switching

The cost is \$375.

This course describes the architecture, components and operations of routers and switches in a small network. Students learn how to configure a router and a switch for basic functionality. Students will learn to configure and troubleshoot routers and switches, and resolve common issues with RIPv1, RIPv2, single area and multi-area OSPF, virtual LANs and inter-VLAN routing in both IPv4 and IPv6 networks. Lab work is designed to simulate real-world networking. This course is the second of four networking courses to prepare students for the Cisco Certified Network Associate (CCNA) certification exam. This hybrid course meets concurrently with the credit course, CNET 152 and requires some online coursework. The required text is available at the MCC Bookstore or online at www.montcalm.edu/bookstore.

XCIS 137 01

Mon, Oct. 29-Dec. 10, 5-9 p.m.
G100/Ash TLC in Greenville

Word 2016 – Part 1

The cost is \$75.

Learn how to use Word 2016 to create and edit simple documents, format documents, add tables and lists, add design elements and layout options and proof documents. You can also use this course to prepare for the Microsoft Office Specialist (MOS) Certification exams for Microsoft Word 2016. The required text is available at the MCC Bookstore or online at www.montcalm.edu/bookstore.

XCIS 541 01

Tues & Thur, Sept. 11 & 13, 8 a.m.-Noon
G112/Ash TLC in Greenville

XCIS 541 02

Mon & Wed, Dec. 3 & 5, 5-9 p.m.
P103/Panhandle Area Center in Howard City

Word 2016 – Part 2

The cost is \$75.

Expand your knowledge of Microsoft Word by learning how to work with tables and charts to organize and summarize data by using styles and themes to customize the look of your documents. Learn to add images and custom graphic elements to your documents to graphically show information, and how to control how text flows around graphics, between paragraphs and between pages, and use section, page and column breaks in your documents. Learn to use templates to maintain consistency between documents and the mail merge feature to customize and personalize content. Finally, learn to create and use macros to automate tasks. You can also use this course to prepare for the Microsoft Office Specialist (MOS) Certification exams for Microsoft Word 2016. The required text is available at the MCC Bookstore or online at www.montcalm.edu/bookstore.

XCIS 542 01

Tues & Thur, Sept. 18 & 20, 8 a.m.-Noon
G112/Ash TLC in Greenville

XCIS 542 02

Mon & Wed, Dec. 10 & 12, 5-9 p.m.
P103/Panhandle Area Center in Howard City

Word 2016 – Part 3

The cost is \$75.

This course builds upon the knowledge presented in Word 2016 – Part 1 and Word 2016 – Part 2 courses. Learn to collaborate on documents, add reference marks and notes, simplify and manage long documents, secure a document and create forms. You can also use this course to prepare for the Microsoft Office Specialist Certification exams for Microsoft Word 2016. The required text is available at the MCC Bookstore or online at www.montcalm.edu/bookstore.

XCIS 543 01

Tues & Thur, Sept. 25 & 27, 8 a.m.-Noon
G112/Ash TLC in Greenville

XCIS 543 02

Mon & Wed, Dec. 17 & 19, 5-9 p.m.
P103/Panhandle Area Center in Howard City

12 Life Focus

EASY ONLINE REGISTRATION! →



Excel 2016 – Part 1

The cost is \$75.

Learn to create and develop Excel worksheets and workbooks in order to work and analyze critical data. Skills include performing calculations, modifying and formatting worksheets, and performing and managing workbooks. This course covers Microsoft Office Specialist (MOS) Certification exam objectives to help students prepare for the Excel 2016 Exam and the Excel 2016 Expert Exam. The required text is available at the MCC Bookstore or online at www.montcalm.edu/bookstore.

XCIS 521 01

Mon & Wed, Oct. 8 & 10, Noon-4 p.m.

G112/Ash TLC in Greenville

XCIS 521 02

Tues & Thur, Nov. 6 & 8, 5-9 p.m.

D309/Beatrice E. Doser Building in Sidney

Excel 2016 – Part 2

The cost is \$75.

This course builds upon the foundational knowledge presented in the Excel 2016 – Part 1 course and will help start you down the road to creating advanced workbooks and worksheets that can help deepen your understanding of organizational intelligence. Learn to customize the Excel environment, create advanced formulas, analyze datasets and tables, visualize data by using basic charts and analyze data by using PivotTables, slicers and PivotCharts. This course covers Microsoft Office Specialist exam objectives to help students prepare for the Excel 2016 Exam and the Excel 2016 Expert Exam. The required text is available at the MCC Bookstore or online at www.montcalm.edu/bookstore.

XCIS 522 01

Mon & Wed, Oct. 15 & 17, Noon - 4 p.m.

G112/Ash TLC in Greenville

XCIS 522 02

Tues & Thur, Nov. 13 & 15, 5-9 p.m.

D309/Beatrice E. Doser Building in Sidney

Excel 2016 – Part 3

The cost is \$75.

This course builds off of the foundational and intermediate knowledge presented in the Excel 2016 – Part 1 and Excel 2016 – Part 2 courses to help you get the most of your Excel experience. The ability to collaborate with colleagues, automate complex or repetitive tasks, and use conditional logic to construct and apply elaborate formulas and functions will put the full power of Excel right at your fingertips. The more you learn about how to get Excel to do the hard work for you, the more you'll be able to focus on getting the answers you need from the vast amounts of data your organization generates. Learn to work with multiple worksheets and workbooks simultaneously, share and protect workbooks, automate workbook functionality, apply conditional logical, audit worksheets, use automated analysis tools and present your data visually. This course covers Microsoft Office Specialist exam objectives to help students prepare for the Excel 2016 Exam and the Excel 2016 Expert Exam. The required text is available at the MCC Bookstore or online at www.montcalm.edu/bookstore.

XCIS 523 01

Mon & Wed, Oct. 22 & 24, Noon-4 p.m.

G112/Ash TLC in Greenville

XCIS 523 02

Tues & Thur, Nov. 27 & 29, 5-9 p.m.

D309/Beatrice E. Doser Building in Sidney

Data-Driven Presentations

The cost is \$49.

Learn how to create powerful PowerPoint presentations using Excel data for presentations containing depth and visual interest.

XCIS 550 01

Fri, Oct. 12, Noon-3 p.m.

G112/Ash TLC in Greenville



LUNCH AND LEARN

Making the Sale

Taught by Rob Spohr. The cost is \$25.

Everyone thinks they can sell. Can you? Are you sure? In this class you will explore the selling process and learn how to develop your own selling style that works. Lunch is included.

XBUS 104 01

Wed, Sept. 12, 11 a.m.-1 p.m.

G113/Ash TLC in Greenville

Collaboration in the Modern Workplace

Taught by Kevin Wagenmaker. The cost is \$25.

Learn how to effectively collaborate and stay connected with your work team using the tools of the modern workplace. Lunch is included.

XCIS 524 01

Fri, Sept. 14, Noon-1:30 p.m.

G112/Ash TLC in Greenville

Office 365 Updates

Taught by Kevin Wagenmaker. The cost is \$25.

Learn the latest enhancements to Office apps, including Word, Excel, Outlook, PowerPoint and more. Lunch is included.

XCIS 525 01

Fri, Oct. 12, Noon-1:30 p.m.

G100/Ash TLC in Greenville

Social Media Marketing

Taught by Rob Spohr. The cost is \$25.

Learn a basic understanding of marketing and how to apply it to social media. Lunch is included.

XBUS 201 01

Wed, Oct. 17, 11 a.m.-1 p.m.

G113/Ash TLC in Greenville



Marketing 101

Taught by Rob Spohr. The cost is \$25.

Learn the essentials of marketing your business to increase sales. Lunch is included.

XBUS 197 01

Wed, Nov. 14, 11 a.m.-1 p.m.
G113/Ash TLC in Greenville

Overview of Microsoft Planner

Taught by Kevin Wagenmaker. The cost is \$25.

Learn how to use the Office 365 Microsoft Planner in the online environment and on the project management app. Lunch is included.

XCIS 523 01

Fri, Nov. 16, Noon-1:30 p.m.
G112/Ash TLC in Greenville

Dealing with Employee Turnover

Taught by Leslie Wood. The cost is \$35.

Learn about the factors causing turnover and the subsequent costs of turnover, and how an Onboarding Program can reduce employee turnover. The key aspects of developing a

comprehensive onboarding program will be discussed along with how implementation to an employer's current workforce can reduce turnover. Lunch is included.

XBUS 421 01

Wed, Nov. 28, Noon-1:30 p.m.
G111/Ash TLC in Greenville

CULTURE/TRAVEL

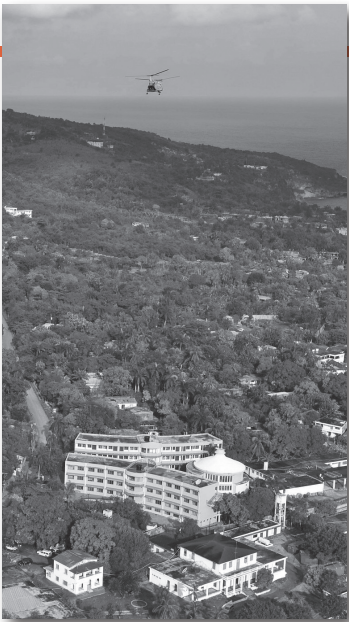
Around the World

Taught by Dr. Gary Hauck and Jared T. Hauck. The cost is \$160.

This course explores countries and cultures throughout the world. In "travelogue style," the instructors share their personal experiences in 100+ countries on six continents and make recommendations for personal travel and cultural enrichment.

XHUM 209 01

Thur, Oct. 11-Dec. 20, 6-8 p.m.
(no class meeting Nov. 8, 15 & 22)
G118/Ash TLC in Greenville



UPCOMING TRIP!

SERVICE-LEARNING IN HAITI

Percussive Tours

Led by Jared Hauck. The cost is TBD.

MCC offers a nine-day service-learning trip to Haiti Jan. 5-13, 2019, in partnership with Percussive Tours. The trip will include volunteer service at a church-sponsored orphanage in Port-au-Prince during the mornings, and cultural and historic sightseeing in the afternoons. The cost per person includes all international and domestic flights, a full-time travel director, all accommodations, airport transfers, some meals, select tours, and all taxes and fees.

For more information and to sign up, visit www.percussive.org/haiti or email Jared Hauck at drmmr@comcast.net. The deadline to register is Sept. 5.

Fall 2018 15

CUSTOMIZED WORKFORCE EDUCATION



Did you know?

Montcalm Community College provides **corporate** and **industry training**.

MCC delivers training locally. Whether your employees require standard courses or customized training, MCC offers you in person, online and hybrid course options at your business or at one of our campuses.

Samples of training topics include the following:

LEAN

Safety – OSHA 10 and OSHA 30

Industrial First Aid, CPR,
Bloodborne Pathogens & AED

ISO Quality Management
Development & Implementation

Internal Auditor

GD&T

Blueprint Reading

Industrial Math

Calibration

Metrology

Quality CORE Tools
(PPAP-FMEA-SPC-MSA-APQP)

Team Building

Leadership

Effective Supervision

Sales

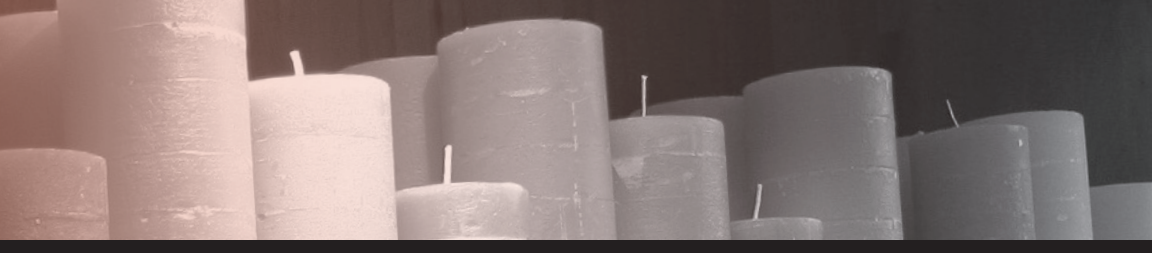
Microsoft Office

AWS Welding Qualification
Training and Testing

CNC

To learn more about MCC's Workforce Education, contact Susan Hatto at susan.hatto@montcalm.edu or 989-328-1254.

For information about other
available courses, visit
www.montcalm.edu/career-development.



HOBBIES

Introduction to 3D Printing Workshop Part 1

Taught by David Nelson. The cost is \$49.

This introductory workshop is designed as an introduction to 3D printing (FDM - Fused Deposition Modeling) process. Modules and activities are designed to explore 3D technology including currently available 3D printers, the components and basics used in 3D printers and how to get started using the most common type of 3D printer for individuals, the FDM printer. Learn how to find, download and use pre-made designs; how to setup a free Autodesk account; prepare your designs for 3D printing (slicing); software settings and object layout; and settings and common errors that occur when printing with a 3D printer. Each attendee will have the opportunity to design and create their own 3D object and print it using one of the printers in class with instructor guidance.

XCIS 530 01

Wed, Sept. 12 & 19, 6-8:30 p.m.

G210/Braman Center in Greenville

Introduction to 3D Printing Workshop Part 2

Taught by David Nelson. The cost is \$49.

This workshop will continue what was started in Part 1 and will look further at designing objects using Fusion 360 (CAD). Topics will include a deeper dive into settings and errors found in 3D printing; 3D printing materials; examining Autodesk Fusion 360 as a design tool to create objects for 3D printing. In addition, attendees will learn how to design creations, object preparation (slicing), slicer settings, printer configuration, design printing, and workflow for 3D printing.

XCIS 531 01

Wed, Oct. 17 & 24, 6-8:30 p.m.

G210/Braman Center in Greenville

Propagating Seasonal Winter Plants

Taught by Elizabeth Pitzer. The cost is \$39.

Some plants simply announce the holiday season. Plants such as amaryllis, poinsettia and Christmas and Thanksgiving cacti bring cheer to the season and make wonderful gifts, but they are expensive. Learn in this class how to start now to propagate these holiday gifts to make more plants for yourself or to give as thoughtful gifts. Participants will take home cuttings of poinsettia and Christmas cactus to root for the coming season.

XHFL 164 01

Wed, Oct. 10, 6-9 p.m.

G210/Braman Center in Greenville

Transferring Images onto Candles

Taught by Elizabeth Pitzer. The cost is \$39.

Learn how to make this impressive seasonal gift in a few simple steps. Participants may bring up to three white or light colored candles to transfer images onto. Rubber stamps, inks markers, colored pencils, and all other tools and supplies needed to create an image and then heat-transfer it onto the candle will be supplied. An assortment of ribbons and embellishments will also be provided to put the finishing touch on each participant's one of a kind creation.

XART 650 01

Wed, Nov. 7, 6-9 p.m.

G210/Braman Center in Greenville

Fall 2018 17

MARK YOUR CALENDAR!

ARTS & CULTURAL EVENTS AT MCC

All lectures are accompanied by lunch or dinner, which are free for students with a current MCC student ID and are \$2 each for all others. All events are free and do not require registration unless otherwise noted. For more information, visit www.montcalm.edu/arts-and-culture or contact MCC Cultural Events Coordinator Karen Maxfield at karen.maxfield@montcalm.edu or (989) 328-1065.

AUGUST

2-4 Heritage Festival at
Montcalm Heritage Village

SEPTEMBER

7 Lifelong Learners
"Farming: Yesterday, Today
and Tomorrow" presentation

17 Constitution Day observed

21 Lifelong Learners
"Getting Started in Family
Search" presentation

28 All-day trip to ArtPrize

OCTOBER

2 One Book One County
Closing Celebration

4 Heritage Village Dinner

5 Lifelong Learners "Natives in
a Digital World: Technology
These Days!" and "Confessions
of a Backyard Beekeeper"
presentations

11 "Darwin: Books, Beetles and
Blasphemy" by David A. Wooten,
Ash Lectureship Series

12 Broadway Grand Rapids

19 Lifelong Learners presentation
by Mike Stafford

27 Halloween at Heritage Village

NOVEMBER

3-4 MCC's drama class play

11 MCC Philharmonic
Orchestra Concert

12 Veteran's Day observed

14 Native American Month program

19-21 and 26-29
Winter Artists' Market

DECEMBER

3-7 Winter Artists' Market

9 MCC Alumni & Friends Choir
"Messiah" concert



HOME/FAMILY

Instant Pot 101

Taught by Mary Palmer. The cost is \$39.

Do you have an Instant Pot and are afraid to try it? Learn the basics and join us for a demonstration in the kitchen as we learn some of the fun, easy and delicious ways to use it.

XHFL 201 01

Thur, Sept. 13, 6-9 p.m.

G125 (Kitchen)/Ash TLC in Greenville

A Whole Food Plant-Based Diet

Taught by Elizabeth Pitzer. The cost is \$39.

Come learn about “food you love that loves you back.” More and more people are identifying as vegans and doing their best to follow a whole food plant-based diet for the good of their bodies and the environment. This can be more challenging during the holidays. Elizabeth will demonstrate cooking tips and techniques while making dishes that are wholesome yet holiday ready. Enjoy enough samples to make up a meal, all while discussing the benefits of a whole food plant-based diet.

XHFL 165 01

Wed, Dec. 19, 6-9 p.m.

G111/Ash TLC in Greenville

Making Vinegars

Taught by Elizabeth Pitzer. The cost is \$39.

Vinegars can be easily made at home through natural fermentation. In this class, learn how to make vinegars from cider, wine and honey — each with its own unique flavor profile. Also, learn easy techniques for flavoring vinegar including recipes for vinegar flavored with berries and vinegar flavored with chive blossoms. Participants will take home recipes and their choice of a vinegar to ferment at home and two samples of flavored vinegar.

XHFL 163 01

Wed, Sept. 12, 6-9 p.m.

G119/Ash TLC in Greenville

Medicare Made Easy

Taught by Lori Williams, Medicare plan specialist at Michigan Farm Bureau. This course is free, but pre-registration is required.

Medicare can be confusing. It's easy to miss important information and make a wrong choice that can cost you thousands of dollars down the road. Learn all about the ABCs and D of Medicare, and how to make the most of your Medicare benefits. No products will be sold here; it's strictly educational. This class is appropriate for anyone who will be signing up for Medicare in the near future and their caregivers.

XDVE 220 01

Wed, Oct. 10, 6-7:30 p.m.

G129/Ash TLC in Greenville

Women's Self-Defense

Taught by the Michigan State Police Lakeview Post. This course is free, but pre-registration is required. This class is for ages 16 and older.

The Michigan State Police offers a self-defense class for women. Topics will include awareness of your surroundings, being observant, avoidance of dangerous situations and hands-on techniques of self-defense.

XSAF 115 01

Mon, Oct. 1, 6-8 p.m.

G129/Ash TLC in Greenville

XSAF 115 02

Tues, Nov. 6, 6-8 p.m.

G129/Ash TLC in Greenville

Fall 2018 19



HEALTH CARE

Certified Nurse Assistant

The cost is \$999.

Classroom lecture, simulated labs and supervised experience in long-term care facilities are combined to provide the basic nursing skills and knowledge necessary for you to provide patient care appropriately and safely. Upon successful completion, you are eligible for employment in health care facilities and to apply for the State of Michigan competency test. A background check is required. You are required to provide proof of a current TB test and Hepatitis B immunization records. The two sets of required scrubs, textbook with CD, lab supplies and badge holder are available at the MCC Bookstore or online at www.montcalm.edu/bookstore.

XMED 103 01

Lecture and Lab:

Wed & Fri, Sept. 12-Nov. 7, 8:30 a.m.-12:30 p.m.
S102/Smith Instructional Building in Sidney

Orientation and Clinicals:

Wed & Fri, Nov. 9-Dec. 7, TBA

First Aid

Taught by Don Eady. The cost is \$65.

The American Heart Association Heartsaver® First Aid is for anyone with limited or no medical training who needs a course completion card in first aid. First aid basics, medical emergencies, injury emergencies and environmental emergencies are covered. The enrollment deadline is one week before the course begins.

XMED 248 01

Fri, Oct. 5, 8 a.m.-Noon

G210/Braman Building in Greenville



CPR/BLS Health Care Provider

Taught by Don Eady. The cost is \$75.

The American Heart Association BLS for Health Care Providers Course prepares a wide variety of health care professionals to recognize several life-threatening emergencies and to provide CPR, use an AED and relieve choking in a safe, timely and effective manner. The course fee includes the cost of the book, mask and card. Enrollment deadline is one week before the course begins.

XMED 243 01

Fri, Sept. 21, 1-6 p.m.

N510/Instruction North Building in Sidney

XMED 243 02

Fri, Oct. 26, 8 a.m.-2 p.m.

G210/Braman Building in Greenville

XMED 243 03

Fri, Dec. 7, 8 a.m.- 2 p.m.

N510/Instruction North Building in Sidney

Heartsaver CPR

Taught by Don Eady. The cost is \$65.

American Heart Association Heartsaver® CPR AED is an instructor-led course that teaches adult and child CPR and AED use, infant CPR and how to relieve choking in adults, children and infants. This course teaches skills with the AHA's research-proven practice-while-watching technique, which allows instructors to observe the students, provide feedback and guide the students' learning of skills. Enrollment deadline is one week before the course begins.

XMED 138 01

Fri, Nov 9, 1-5 p.m.

N510/Instruction North Building in Sidney

Dental Assisting Program

Taught by CCI. The cost is \$1,199.

This 60-hour program prepares students for entry level positions in one of the fastest growing health care positions – Dental Assisting. The purpose of this course is to familiarize the student with all areas of pre-clinical dental assisting and provide training in the professional skills required to function as an assistant in the dental practice. This course covers the following key areas and topics: Administrative aspects include the history of dentistry and dental assisting; introduction to the dental office; the legal aspects of dentistry; policies and guidelines. Clinical aspects include introduction to oral anatomy; dental operatory; dental equipment, introduction to tooth structure; primary and permanent teeth; the oral cavity and related structures; proper patient positioning; dental hand-pieces; sterilization; and other areas. In addition to entry-level administrative jobs, this course is ideal for students interested in pursuing a future formal dental hygienist program.

XMED 304 01

Mon & Wed, Oct. 15-Dec. 12, 6-9:30 p.m.

D315/Beatrice E. Doser Building in Sidney



HEALTH CARE

continued

Pharmacy Technician Program

Taught by CCI. The cost is \$1,199

This comprehensive 50-hour program prepares students to work as a pharmacy technician in a retail or other pharmacy setting and to take the Pharmacy Technician Certification Board's PTCB exam. Course content includes pharmacy medical terminology, the history of pharmacy, the pharmacy practice in multiple environments, pharmacy calculations and measurements, reading and interpreting prescriptions and defining drugs by generic and brand names. Through classroom lecture and hands-on labs, students will review dosage calculations, drug classifications, the "top 200 drugs," I.V. flow rates, sterile compounding, dose conversions, aseptic technique, the handling of sterile products, total parental nutrition (TPN), dispensing of prescriptions, inventory control and billing and reimbursement.

XMED 300 01

Tues & Thur, Oct. 23-Dec. 13, 6-9:30 p.m.
G119/Ash TLC in Greenville

Online E-Learning Health Care Courses

Visit www.healthtoday.com/Montcalm to experience a course demonstration and to learn more about these programs.

Pharmacy Technician – Online

Taught by CCI. The cost is \$1,299.

This comprehensive course prepares students to enter the pharmacy field and take the Pharmacy Technician Certification Board's PTCB exam. Course content includes pharmacy medical terminology, pharmacy calculations, reading and interpreting prescriptions, defining

generic and brand name drugs and more. The program also includes an optional clinical externship at a local health care provider.

XMED 303 01

Start anytime. Call to register.

Medical Billing & Coding – ONLINE

Taught by CCI. The cost is \$1,799.

This billing and coding course offers the skills needed to perform complex coding and billing procedures. The course covers CPT (Introduction, Guidelines, Evaluation and Management), specialty fields (such as surgery, radiology and laboratory), ICD-9 (Introduction and Guidelines) and basic claims processes for insurance reimbursements.

XMED 131 01

Start anytime. Call to register.

Medical Coding ICD-10 – ONLINE

Taught by CCI. The cost is \$999.

As of October 2014, the U.S. health care system is working to move from ICD-9 to ICD-10 for service coding purposes. This program includes a detailed review of both ICD-10 (diagnostic coding) and ICD-10-PCS (inpatient procedural coding), differences between ICD-9 and ICD-10, federal regulation, hands-on exercises, case studies and more.

XMED 202 01

Start anytime. Call to register.

Dental Assisting – ONLINE

Taught by CCI. The cost is \$1,299.

This course prepares students for entry-level positions as a chairside dental assistant. It covers the history of dentistry, introduction to the dental office, the legal aspects of dentistry, oral anatomy, dental operator, tooth structures, primary and permanent teeth, the oral cavity and other areas. It also includes an optional clinical externship with a local health care provider.

XMED 306 01

Start anytime. Call to register.



LANGUAGES

Conversational Spanish

Taught by Maria Krawczyk. The cost is \$45.

This interactive course introduces you to the basics of communicating in Spanish in either personal or professional settings. You'll practice speaking and listening in class and learn interesting facts about Hispanic culture and customs.

XSPA 100 01

Wed, Sept. 26-Oct. 31, 6-8 p.m.

Greenville

G113/Ash TLC in Greenville

Introduction to Biblical Hebrew

Taught by Dr. Gary Hauck. The cost is \$100.

Learn the Hebrew alphabet, introductory vocabulary and basic structure and use of the Hebrew language as used in the Jewish *Tanah* and Christian *Old Testament*. The course also introduces participants to helpful tools and resource guides used in the interpretation of sacred texts.

XLAN 400 01

Thur, Oct. 11-Nov. 1, 3-5 p.m.

G111/Ash TLC in Greenville

Introduction to Biblical Greek

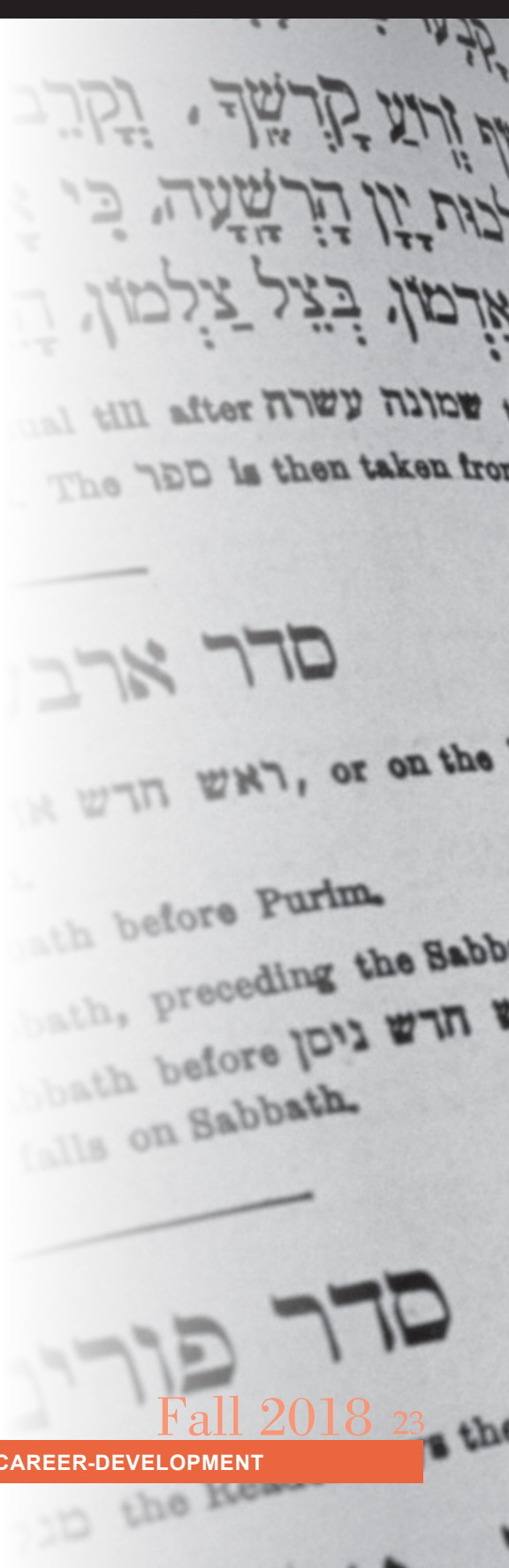
Taught by Dr. Gary Hauck. The cost is \$100.

Learn the Greek alphabet, introductory vocabulary and basic structure and use of the koine Greek language as used in the Christian *New Testament* and early literature. This course also introduces participants to helpful tools and resource guides used in the interpretation of sacred texts.

XLAN 401 01

Thur, Nov. 29-Dec. 20, 3-5 p.m.

G111/Ash TLC in Greenville



Fall 2018 ²³



MUSIC

MCC Philharmonic Orchestra

The cost is \$15.

This course is for instrumentalists with previous instrumental ensemble experience. The fall 2018 concert is Nov. 11 at 3 p.m. on MCC's Sidney campus.

XMUS 150 01

Practice dates and times are TBA and will be posted on www.montcalm.edu/arts-and-culture when they are available.

Band Room/Greenville Middle School

MCC Alumni & Friends Choir

Taught by Val Vander Mark. The cost is \$15.

MCC's Alumni & Friends Choir is a community and student non-audition choir that welcomes everyone, high school age and older, who has an interest in singing in a choral group. The choir performs a concert each fall and spring, and sings for MCC's commencement in May. Repertoire ranges from pop to classical, depending on the concert theme. The fall 2018 "Messiah" concert is Dec. 9 at 3 p.m. at the Greenville High School Performing Arts Center. Choir members may choose to practice on Thursday evening in Sidney or Saturday morning in Greenville.

XMUS 155 01

Thur, Oct. 11-Dec. 6, 6:30-8:30 p.m.
(no practice on Nov. 22)

M211/Morford Building in Sidney

Sat, Oct. 6-Dec. 8, 10 a.m. - Noon

(no practice on Nov. 24)

G129/Ash TLC in Greenville

Group Piano Lessons

Taught by Mary Palmer. The cost is \$49.

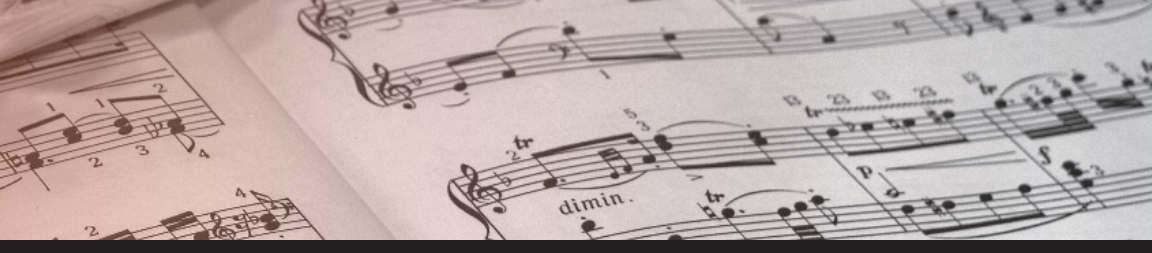
This class is for ages 10 and older.

Learn to play the piano in a small group setting. No experience is necessary. Instruction will take place on keyboards. Additional materials fee is \$10.

XMUS 160 01

Tues, Sept. 4-25, 4-6 p.m.

M211/Morford Building in Sidney



TECHNOLOGY

How to Use Your iPhone/iPad

Taught by Mary Palmer. The cost is \$29.

Learn your way around your iPhone/iPad. Get a handle on the basics and fun features during this hands-on learning experience. Learn to control settings and create shortcuts to maximize the potential of your device. A discussion of useful apps will expand the users understanding of what their device can do. Bring your charged device and your apple ID and password.

XCIS 219 01

Thur, Oct. 4, 2-6 p.m.

G100/Ash TLC in Greenville

Be an iPhone and iPad Power User

Taught by Mary Palmer. The cost is \$29.

Imagine a class where the facilitator asks you to take out your iPhone/iPad and look at your email. In this fun, fast-paced, incredibly relevant course, you'll discover exciting new shortcuts, tips and tricks for maximizing iPhone/iPad productivity. The course is a deeper dive into the productivity tips already built into this great tool. You'll learn to organize your iPhone/iPad so you can navigate easily and find each app quickly. We'll end with a quick discussion about the apps that help us stay organized and get more done. The shortcuts are designed to save users thousands of clicks per year. All tips are practiced in real time by participants to increase retention. Tips to improve work and life balance, job safety and communication skills are shared.

XCIS 231 01

Thur, Nov. 15, 2-6 p.m.

G100/Ash TLC in Greenville

Android Phone Basics

Taught by Mary Palmer. The cost is \$29.

Get to know your Android phone. Learn how to use all the fun features so you're not just calling, texting and taking pictures. Discover how to add memory and use cloud storage. Individual attention will be available. Bring your charged device and your Google Play store ID and password.

XCIS 332 01

Tues, Dec. 4, 2-6 p.m.

G100/Ash TLC in Greenville

How to Use Your Kindle Fire

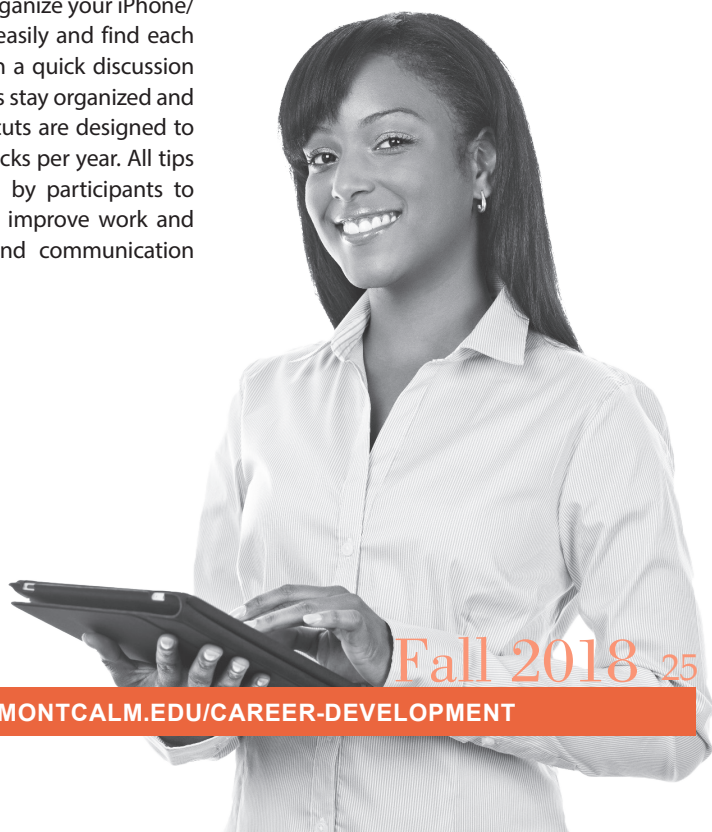
Taught by Mary Palmer. The cost is \$29.

Get to know your Kindle Fire. Learn how to use all the fun features, navigate apps and take pictures. Discover how to add memory and use cloud storage. Use Alexa on your Kindle Fire and also download movies to watch out of wifi. Individual attention will be available. Bring your charged device and your Amazon ID and password.

XCIS 333 01

Thur, Oct. 25, 2-6 p.m.

G100/Ash TLC in Greenville



Fall 2018 25

SCECH FOR TEACHERS

STATE CONTINUING EDUCATION CLOCK HOURS

Continuing education courses designed for K-12 teachers and administrators. Earn up to 24 Michigan State Continuing Education Clock Hours per course.

Online courses begin Aug. 15, Sept. 12, Oct. 17, Nov. 14 and Dec. 12.

Classroom courses:

CPR

CPR Refresher

First Aid

Youth Mental Health First Aid

Please contact MCC's SCECH coordinator prior to registering for classes at 989-328-1012 in order to receive full SCECH credit.

Online courses:

Advanced Grant Proposal Writing – Online

Empowering Students with Disability – Online

Fundamentals of Supervision and Management – Online

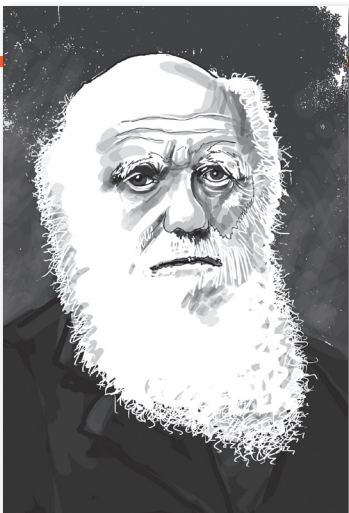
Guided Reading & Writing – Online

Integrating Technology in the Classroom – Online

Leadership – Online

Solving Classroom Discipline Problems – Online

Writing Effective Grant Proposals – Online



ASH LECTURESHIP

Ash Lectureship presents "DARWIN: BOOKS, BEETLES, AND BLASPHEMY"

with David A. Wooten

2:30 to 4 p.m. in rooms D303-305 in the Beatrice E. Doser Building on MCC's Sidney campus

6:30 to 8:30 p.m. in room G129 in the Stanley and Blanche Ash Technology and Learning Center (Ash TLC) on MCC's Greenville campus

Reception/refreshments will be provided for MCC students with valid student ID and are \$2 each for all others.



TEST PREPARATION

Worried about the SAT, ACT or GED?

These courses will help you gain the knowledge you need and help you with test-taking strategies.

GED Test Preparation – ONLINE

Taught by Education To Go. The cost is \$90.

This course will help you develop the additional reading and thinking skills you'll need to succeed in all five GED test areas: writing skills, social studies, science, literature and math. After completing this course, you should be well-equipped to take – and pass – the GED.

XEDG 533

Offered monthly. See Education To Go start dates and enrollment information on p. 37.

Prepare for the GED Math Test – ONLINE

Taught by Education To Go. The cost is \$90.

Master the skills required to successfully pass Test 5 in the GED test series. You'll start off with a review of math basics and begin building the foundation you'll need to solve the types of math problems commonly found on the test. In the process, you'll develop hands-on experience with fractions, decimals, percentages, proportions, statistics, algebra and geometry. Then, you'll get a chance to apply your knowledge by practicing with the same kind of questions you may encounter on the GED test. By the time you finish this course, you'll be much more comfortable with your math skills, and you'll know how, when and why to use each math concept you learn.

XEDG 535

Offered monthly. See Education To Go start dates and enrollment information on p. 37.

SAT/ACT Preparation

Part 1 – ONLINE

Taught by Education To Go. The cost is \$90.

Prepare for the reading, English and science sections of the ACT and the critical reading and writing sections of the new SAT 2005. Refresh your knowledge of verbal topics and learn techniques to relieve test-taking anxiety.

XEDG 531

Offered monthly. See Education To Go start dates and enrollment information on p. 37.

SAT/ACT Preparation

Part 2 – ONLINE

Taught by Education To Go. The cost is \$90.

In addition to preparing you for specific question types on both exams, this course provides pointers on time management, anxiety relief, scoring and general standardized test-taking. Weekly assignments encourage you to work with your fellow classmates and your instructor to maximize your performance on all aspects of the math questions of the ACT and SAT. Taken with part 1, this course prepares you to excel in all sections of the undergraduate college entrance exams and provide you with the means to achieve your best potential score.

XEDG 532

Offered monthly. See Education To Go start dates and enrollment information on p. 37.

KIDS' COLLEGE

Art

"Fall into Art"

Taught by Sue Moss. The cost is \$39.

This class is for ages five and older.

Fall brings special and unique colors, patterns, holidays and seasonal changes. In this class, children ages five and older will explore the themes of fall using a variety of art media such as paint, pastels, charcoal, pen and ink, fiber and mixed media. This course is designed to foster creativity and imagination within each child. At the end of the course, participants will hold an exhibit to showcase what they have learned.

XART 106 01

Mon, Sept. 10–Oct. 15, 4:30–5:30 p.m.

G125/Ash TLC in Greenville

Get Messy

Taught by Sue Moss. The cost is \$39.

This class is for ages five and older.

Roll up your sleeves and come find out about making art. In this class, children will design and create art without worrying about getting messy. Students will be given the opportunity to paint, draw and sculpt using repurposed and reused materials, while learning about process and technique. At the end of the course, participants will hold an exhibit to showcase what they have learned and created.

XART 108 01

Mon, Oct. 22–Nov. 26, 4:30–5:30 p.m.

G125/Ash TLC in Greenville

Health Care

Babysitter Heartsaver CPR

Taught by Don Eady. The cost is \$65.

This class is for ages 10 and older. American Heart Association Heartsaver® CPR is an instructor-led course that teaches child and infant CPR and how to relieve choking in children and infants. This course teaches skills with the AHA's research-proven practice-while-watching techniques, which allows instructors to observe the students, provide feedback and guide the students' learning of skills. Enrollment deadline is one week before the course begins.

XMED 150 01

Wed, Dec. 12, 5–8 p.m.

G119/Ash TLC in Greenville



PROFESSIONAL DEVELOPMENT FOR PARAPROFESSIONALS & TEACHERS

The workshops provide professional learning for individuals working with at-risk students, and though they are aimed at paraprofessionals, they are relevant to teachers, volunteers and support staff.

Trauma Informed Schools

The cost is \$10.

Learn about the importance of creating a trauma lens within our school systems and focusing on an approach that asks, "What has happened to you?" rather than, "What is wrong with you?" Participants will take a look at increasing conceptual knowledge of trauma, traumatic stress reactions and common responses to trauma as well as the neurological impact of trauma on the brain and development. The group will also discuss strategies for reaching and teaching children living within traumatic life experiences.

XEDU 354 01

Wed, Sept. 12, 5-9 p.m.

D317/Beatrice E. Doser Building in Sidney

PBIS/Classroom PBIS/CHAMPS

The cost is \$10.

The PBIS (Positive Behavioral Interventions and Supports) training will cover the systemic approach to managing behavior utilizing a building wide system and classroom system. This approach utilizes positive behavioral strategies as the catalyst for preventing behavior. Participants will look at the six big ideas of PBIS, the critical components of a classroom system and specific strategies for engagement and management of behavior through the CHAMPS approach.

XEDU 355 01

Wed, Oct. 10, 5-9 p.m.

D317/Beatrice E. Doser Building in Sidney

Restorative Practices and De-escalating Behaviors

The cost is \$10.

The fundamental theory of restorative practices is that "humans are happier, more cooperative and productive, and more likely to make positive changes in their behavior when those in positions of authority do things with them rather than to them or for them" (Wachtel, 2005). Participants will learn the value of the social discipline window as well as how to use effective statements and questions. Restorative practices help to reduce crime, violence and bullying, improve human behavior, strengthen civil society, provide effective leadership, restore relationships and repair harm. When challenging behaviors do occur, having strategies to support students and help de-escalate are vital. Participants will learn about the verbal escalation continuum and strategies to support students in each phase.

XEDU 356 01

Wed, Nov. 7, 5-8:30 p.m.

D317/Beatrice E. Doser Building in Sidney

START - Evidence Based Strategies

The cost is \$10.

One in 59 children are identified with an autism spectrum disorder. Participants will get a basic understanding of how autism impacts students. Participants will also learn evidence based strategies to support students who have autism. These strategies are autism led but not autism specific. These evidence based strategies will work with all students. Participants will leave with a toolbox of ideas to work with a variety of students.

XEDU 357 01

Wed, Nov. 14, 5-8:30 p.m.

D317/Beatrice E. Doser Building in Sidney

Fall 2018 29



KENNETH J. LEHMAN NATURE TRAILS ACTIVITIES

The Kenneth J. Lehman Nature Trails are located on Montcalm Community College's Sidney campus. They are open to the public from dawn until dusk, 365 days a year. There is no charge to visit these beautiful trails winding through forests, grasslands and wetlands. More than four miles of trails are marked with numbered trail posts, including a paved and accessible loop, and maps are available at most major trail heads. For more information, email naturetrails@montcalm.edu, call 989-328-1270 or visit www.montcalm.edu/nature-trails or visit the MCC Nature Trails Facebook page at www.facebook.com/MCCNatureTrails.

Nature Photography Contest

Aug. 27–Sept. 28

Submit your 2018 photos of the animals, plants, and landscape features from the MCC Nature Trails by replying (commenting) on the post on the MCC Nature Trails Facebook page at www.facebook.com/MCCNatureTrails. Please include your name, the trail name, a photo title or description and your category (animal, plant, landscape or other). You are welcome to tag yourself in your photos. Contest winners will be announced in early October. Winning photos in each category will be displayed on the college's Sidney campus.

Trail Thursdays

Thursdays, Aug. 27–Sept. 28, 5-6 p.m.

Join MCC Biology Instructor Heather Wesp for informative and fun walks on the Kenneth J. Lehman Nature Trails on MCC's Sidney campus. Learn about local plants, animals and ecology. Your interests and questions drive this class, which meets rain or shine. People of all ages are welcome. Meet in room A138 in the Stanley P. Ash Building on MCC's Sidney campus.



Bramble Ramble - 5K Run/Walk and 10K Run

Saturday, Sept. 22, 9-11 a.m.

The 4th annual Bramble Ramble features a 5K run/walk or 10K run, which showcase the variety and beauty of Montcalm Community College's Kenneth J. Lehman Nature Trails. Participants will cover smooth, open paths, rocky hills, and winding trails through pines and oaks, fields and swamps, and finish on a mowed field. Prizes are awarded and T-shirts are included in registration. Family/group registrations are available. Visit www.montcalm.edu/bramble-ramble for more information and registration forms.

Mushroom Walk

Saturday, Sept. 8, 10-11:30 a.m.

Have you ever seen a mushroom and wondered what it was called? Learn the basic parts of a mushroom and explore the most common mushrooms types. Then you'll head out on the Kenneth J. Lehman Nature Trails to identify locate and identify mushrooms. This class will not address edibles or food preparation. People of all ages are welcome. Meet in room A138 in the Stanley P. Ash Building on MCC's Sidney campus.

Astronomy for Kids

Friday, Oct. 5, 7:30 p.m.

Join MCC Instructor Don Adkison as he introduces basic astronomy topics. This session will focus on child-friendly activities (for children ages 7 to 12) as well as night sky viewing. Dress appropriately for the weather; attendees may want to bring flashlights with the ends covered in red Saran wrap and/or blankets. In the event of cloudy skies, the night-sky viewing will be rescheduled for Oct. 6 with the time to be announced on Friday, Oct. 5. Meet in room A138 in the Stanley P. Ash Building on MCC's Sidney campus.

Disc Golf Opening Ceremony

Saturday, Oct. 20

The MCC Nature Trails Committee is installing a disc golf course on the Kenneth J. Lehman

Nature Trails on MCC's Sidney campus. Visit www.montcalm.edu/nature-trails or www.facebook.com/MCCNatureTrails for more information about the official opening ceremony and how to play this 18-hole disc golf course. Course preparation is scheduled for Summer 2018 with basket and signage installation in early fall.

Owls: Facts and Folklore

Friday, Nov. 9, 5-6:30 p.m.

Learn about native owls, including their myths, from MCC Instructor Cheryl Meyer. There will be a 20-minute presentation indoors, then approximately 45 to 50 minutes walking the Kenneth J. Lehman Nature Trails looking and listening for owls. Dress appropriately for the weather, including boots or snowshoes. Participants will return to the classroom around 6:20 p.m. to warm up and wrap up. Meet in room A138 in the Stanley P. Ash Building on MCC's Sidney campus.

Decorative Pine Wreaths

Friday, Nov. 30, 5-8 p.m.

Join MCC Nature Trails Committee members in fashioning pine wreaths to decorate your homes this holiday season. Collect your own pine branches, 12- to 18-inch lengths, no more than 48 hours ahead of time, or join us from 5 to 6 p.m. to collect on campus. Meet in room A138 in the Stanley P. Ash Building on MCC's Sidney campus for all activities. From 6 to 8 p.m., you'll learn how to assemble and decorate a wreath. Wreath frames and plant wire will be provided. We will provide a few of the following but you may want to bring your own: wire cutters, hand clippers (bypass style preferred) and glue guns. Bring any natural decorations (pine cones, berries, etc.) or ribbon you want to decorate with; a bow maker may be on hand (10-foot ribbon lengths needed). There is a \$5 charge per person, payable that evening. We encourage pre-registration by Monday, Nov. 26, to ensure enough supplies.

FITNESS & RECREATION

FITNESS & RECREATION

Yoga

Taught by Diane Christensen. The cost is \$56.

This class focuses on restoring your body's natural state of balance. Yoga poses are brought to your level of ability, but be prepared to work at stretching and strengthening your muscles. Please bring a yoga mat and two dense (firm) blankets.

XHDV 101 01

Tues, Sept. 11-Oct. 23, 6-7:15 p.m.

S014/Smith Building in Sidney

XHDV 101 02

Thur, Sept. 13-Oct. 25, 6-7:15 p.m.

G129/Ash TLC in Greenville

XHDV 101 03

Tues, Oct. 30-Dec. 18, 6-7:15 p.m.

(no class meeting Nov. 20)

S014/Smith Building in Sidney

XHDV 101 04

Thur, Nov. 1-Dec. 20, 6-7:15 p.m.

(no class meeting Nov. 22)

G129/Ash TLC in Greenville

Introduction to Ballroom Dance

Taught by Cynthia Cuffman.

The cost is \$120/couple or \$65/person.

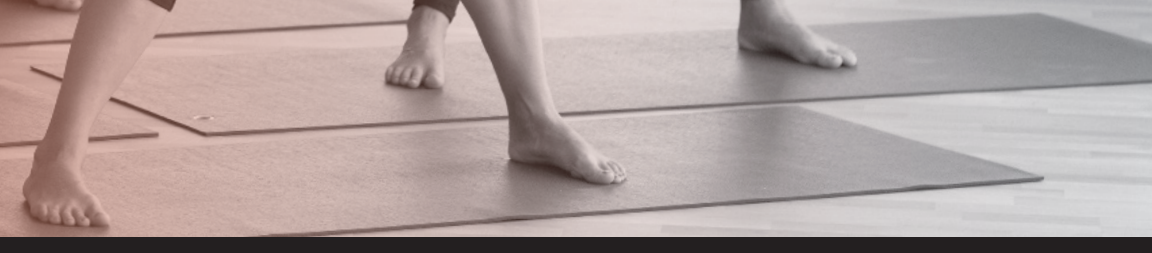
Learn basic dance principles and technique, as well as a survey of various styles of dance including waltz, foxtrot, rumba and nightclub two step.

XPHE 172 01

Mon, Oct. 8-Nov. 26, 6-7:30 p.m.

G129/Ash TLC in Greenville





Yoga Flow

Taught by certified aerobic instructor Maryam Khoury. The cost is \$40 for each 7-week section or \$7 per class for the drop-in rate.

Yoga helps to improve your strength, balance, and flexibility. Suitable for all ages and experience levels.

XHDV 127 01

Mon, Sep. 10-Oct. 22, 7:30-8:30 a.m.
Gym/Activities Building in Sidney

XHDV 127 02

Wed, Sep. 12-Oct. 24, 7:30-8:30 a.m.
Gym/Activities Building in Sidney

XHDV 127 03

Mon, Oct. 29-Dec. 17, 7:30-8:30 a.m.
Gym/Activities Building in Sidney

XHDV 127 04

Wed, Oct. 31-Dec. 19, 7:30-8:30 a.m.
(no class Nov. 21)
Gym/Activities Building in Sidney

Zumba

Taught by certified aerobic instructor Maryam Khoury. The cost is \$40 for each 7-week section or \$7 per class for the drop-in rate.

Zumba is an aerobic fitness program that combines Latin and international music with dance moves for a fun, full body workout.

XHDV 140 01

Mon, Sept. 10-Oct. 22, 6:30-7:30 p.m.
Gym/Activities Building in Sidney

XHDV 140 02

Wed, Sept. 12-Oct. 24, 6:30-7:30 p.m.
Gym/Activities Building in Sidney

XHDV 140 03

Mon, Oct. 29-Dec. 17, 6:30-7:30 p.m.
Gym/Activities Building in Sidney

XHDV 140 04

Wed, Oct. 31-Dec. 19, 6:30-7:30 p.m.
(no class Nov. 21)
Gym/Activities Building in Sidney





MCC Recreation & Fitness Center

Montcalm Community College Sidney Campus

MCC RECREATION & FITNESS CENTER

Drop in Pickleball

Included with the purchase of a recreation pass, and no registration is required to attend. Whether you are a pro or just wanting to learn the sport, come join us for one or all pickleball sessions. Doubles, singles, one court or two courts. We have two sets or bring your own equipment.

Mon, starting Sept. 10, 9:30-10:30 a.m.
Gym/Activities Building in Sidney

Pool

There are programs for everyone from infants to senior citizens, in MCC's NCAA-sized swimming pool. Although we do provide a lifeguard on deck, any child younger than age 10 must be accompanied by an adult at all times.

Open Swim

Mon..... 10 a.m.- 2 p.m. and 7-8:30 p.m.
Tues..... 11 a.m.-2 p.m. and 6-8:30 p.m.
Wed.....10 a.m.- 2 p.m. and 6-8:30 p.m.
Thur.....11 a.m.-2 p.m. and 6-8:30 p.m.
Fri.....10 a.m.- 2 p.m.
Sat..... 12-3 p.m.
Sun..... 1-4 p.m.

Lap Swim

Join us for an hour of lap swimming, which is a great form of exercise. Participants must be at least 17 and proficient swimmers.

Mon.....9-10 a.m.
Tues.....7-8 a.m.
Wed.....9-10 a.m.
Thur.....7-8 a.m.
Fri.....9-10 a.m.

Water Walking

Adults are invited to create their own water walking program and increase their fitness level. Program direction is available from pool staff. Thirty minutes of water walking is equal to two hours of walking on land. Benefits include improved muscle tone, heart health, flexibility and calorie burning.

Mon..... 7-8 a.m.
Tues..... 8-9 a.m.
Wed..... 7-8 a.m.
Thur..... 8-9 a.m.
Fri..... 7-8 a.m.

Water Aerobics

Adults may join instructor led cardiovascular workouts, which can aid in stress management improve sleep, help with weight, control appetite, increase energy, and reduce heart disease and other ailments. Exercises to music include warmup and cooldown and may include using equipment.

Mon..... 8-9 a.m.
Tues..... 9-10 a.m.
Wed..... 8-9 a.m.
Thur..... 9-10 a.m.
Fri..... 8-9 a.m.

Swim Lessons

The cost is \$60 for 6 lessons/ 30-minute classes.

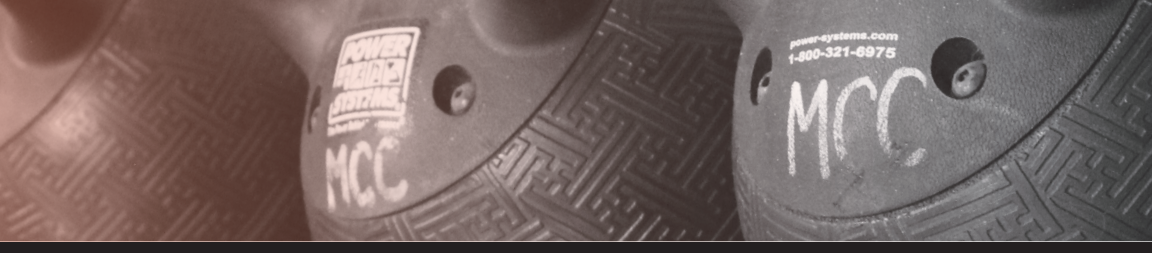
Please check with MCC's Recreation Department for dates and times by calling 989-328-1259.

Private swim lessons

The cost is \$75. Registration is required.

Call 989-328-1209 to coordinate swimming lesson time. Each 30-minute private lesson is programmed to fit individual needs. Lessons are for all ages and skill levels and are scheduled when other activities are occurring in the pool. The cost for a minimum of six private lessons is \$12.50 per lesson.

Pool/Activities Building in Sidney



Gym

The gym may be used for various activities. The daytime gym schedule varies and is subject to change. Please call 989-328-1259 or stop by the MCC Rec Desk for more information. Please bring your own basketballs and equipment you wish to use.

Open Gym

Mon.-Thur 7 a.m.-9 p.m.
Fri..... 7 a.m.-2 p.m. and 4-9 p.m.
Sat 12-3 p.m.
Sun..... 1-4 p.m.

Fitness Center

Improve your fitness level in MCC's air-conditioned self-directed exercise center. The center offers state of the art fitness equipment, treadmills, elliptical trainers, bicycles and a free weight area. You must be 16 years or older to use the facility.

Open Fitness Center

Mon-Thur 7 a.m.-9 p.m.
Fri..... 7 a.m.-2 p.m. and 4-9 p.m.
Sat 12-3 p.m.
Sun..... 1-4 p.m.
There may be college course, noncredit courses, or events scheduled in the gym, fitness center and pool. During these time periods, the facilities may be closed. Please call MCC's Recreation Department at 989-328-1259 for confirmation that the area you wish to use is open.

Climbing Wall

MCC's auto belay systems allows for open climb sessions. Anyone younger than age 18 must be accompanied by a responsible adult. All patrons must sign a waiver and have their belt and shoes checked by the monitor before climbing. We also have belts and climbing shoes available for use.

Intramural Sports

Tues & Thur 7-8 p.m. and 8-9 p.m.
Coed Basketball
3-on-3 or 5-person teams

Fitness Classes

Cardio Boxing

The cost is \$15 per 30-minute class.

This 30-minute class is a mix of total body conditioning and aerobics. Individuals will learn punching and kicking while improving overall conditioning and strength. Call MCC's Recreation Department at 989-328-1259 to schedule.

Stability Ball Training

The cost is \$35 per 8-week class; one class per week. Walk-ins are \$5 per class.

Mon 9 a.m.
This 45-minute class will focus on improving fitness and strength by challenging core muscles of the body for better balance, posture and tone.

Abs and More

The cost is \$35 per 8-week class; one class per week. Walk-ins are \$5 per class.

Wed 8 a.m.
This 30-minute class will work on the stubborn ab and lower back muscles, along with hips, legs and buns. Great for beginner to advanced, regardless of your fitness level.

Sit and be fit Senior aerobics

The cost is \$35 per 8-week class; one class per week. Walk-ins are \$5 per class.

Fri..... 9 a.m.
This 45-minute class consists of strength training, balancing and cardio for the elderly, all done while sitting.

Centurion Fitness Training

The cost is \$45 per 6-week class; one class per week. Walk-ins are \$10 per class.

Tues 6:30 p.m.
This 45-minute class is a combination of a rogue and cross fit training workouts. This will consist of: exercising with tires, ropes, heavy bags, medicine bags and a variety of body weight exercises. This is a fun and challenging way to work out.

FEES, PASSES AND REGISTRATION

RECREATION FEES & PASSES

for Open Fitness Center, Open Gym, Open Swim,
Water Walking & Water Aerobics*

Group

7 to 10 people	\$20
4 to 6 people	\$16
3 people	\$9

Individual

Ages 10-Adult	\$4
Ages 4-9	\$3

10-visit Passes

Ages 10-Adult	\$35
Ages 4-9	\$25

For information on **MONTHLY PASSES**, please contact the
Recreation Desk at 989-328-1259.

***CURRENT MCC STUDENTS** can use the facilities for free by
presenting their MCC ID at the recreation desk.

**CHILDREN YOUNGER THAN 10 MUST HAVE SOMEONE
AGED 18 OR OLDER WITH THEM IN THE POOL.**

For information about other
available courses, visit
www.montcalm.edu/career-development.

REGISTRATION

Begins Aug. 2.

Online:

To register online, visit montcalm.edu/career-development.

In Person:

Registration is accepted weekdays from 8:30 a.m. to 4 p.m. in the Student Services Office in the Donald C. Burns Administration/Library Building on MCC's Sidney campus **OR** Mondays through Thursdays from 8:30 a.m. to 9 p.m., Fridays from 8:30 a.m. to 4 p.m. and Saturdays from 8:30 a.m. to 1 p.m. at MCC's Ash TLC in Greenville.

By Mail or Fax:

Complete the registration form on page 39 and mail it with full payment to **Fall 2018 Registration**, Ash TLC, 1325 Yellow Jacket Drive, Greenville, MI 48838. Write the student's name on your check made payable to Montcalm Community College. You will receive a receipt to confirm registration. Registrations with insufficient payment will be returned. If the course is free, you may fax your registration to 616-754-4587. Registrations can also be scanned and emailed to community@montcalm.edu.

By Phone:

Registration with payment by Visa, Discover or MasterCard is accepted by phone at 989-328-1012 or toll-free at 1-877-328-2111 (press 7 for the Greenville campus), Mondays through Thursdays from 8 a.m. to 9 p.m., Fridays from 8 a.m. to 3 p.m. and Saturdays from 8 a.m. to 1 p.m.

Class sizes are limited and enrollments are taken on a first-come, first-served basis. If a course is cancelled due to low enrollment, you will be contacted by phone or email.

**REGISTRATION MUST
BE COMPLETED AT LEAST
TWO BUSINESS DAYS
BEFORE A COURSE BEGINS.**

ONLINE

"EDUCATION TO GO" COURSE INSTRUCTIONS

MCC offers a variety of online courses under an agreement with Education To Go. You can complete these anywhere you have computer access and the appropriate software. To access course information, go to www.ed2go.com/montcalm and enter the course name in the search field. After you find your course, click on the title to see the course description, a syllabus and instructor information. Each course runs for six weeks and consists of 12 lessons. Once you find the course you want, click Enroll Now. This will take you through orientation, which is required before you can start. You must also register at MCC. Registration information is given as you go through orientation.

FALL SESSIONS:

Session 01–Aug. 15
Session 02–Sept. 12
Session 03–Oct. 17
Session 04–Nov. 14
Session 05–Dec. 12

The first lesson is available at www.ed2go.com/montcalm after 6 p.m. the first day of class. The lessons are supplemented by interactive quizzes, assignments and online discussions. Internet access, an email address and an up-to-date web browser are needed. You must register at MCC at least seven business days prior to the first class. Specific software may be required. Check www.ed2go.com/montcalm for course requirements.

Fall 2018 37

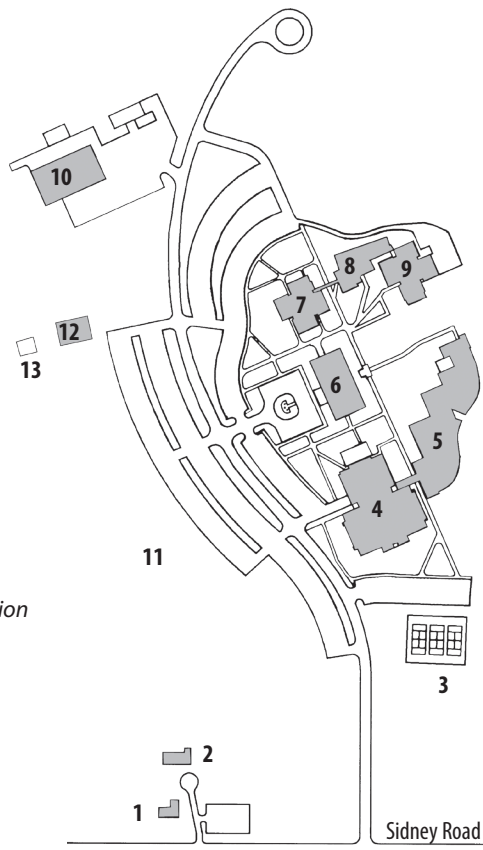
LOCATIONS

MCC'S SIDNEY CAMPUS

2800 College Drive, Sidney, MI 48885-9723

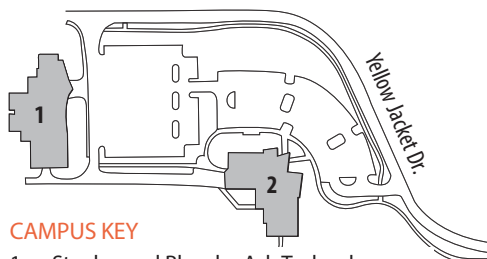
CAMPUS KEY

1. Foundation Farmhouse
2. Barn Theater
3. Tennis Courts
4. Activities Building
5. Beatrice E. Doser Building
6. Donald C. Burns Administration/Library Building
7. Les Morford Instructional Building
8. Stanley P. Ash Building
9. Kenneth J. Smith Instructional Building
10. Instruction North Building
11. Montcalm Heritage Village
12. Greenhouse
13. Robert E. Marston Pavilion



MCC'S GREENVILLE CAMPUS

Ash TLC and Bill Braman Family Center For Education
1325 Yellow Jacket Drive — 989-328-1012



CAMPUS KEY

1. Stanley and Blanche Ash Technology and Learning Center
2. Bill Braman Family Center for Education

BOOKS AND SUPPLIES

The MCC Bookstore, operated by Barnes & Noble, is open from 8:30 a.m. to 6:30 p.m. Mondays through Thursdays.

The bookstore is in the Activities Building on the college's Sidney campus and may be reached by calling 989-328-1278. Visit the bookstore's website to check prices and purchase books online at www.montcalm.edu/bookstore.

If you purchase a book elsewhere, be sure it is the correct edition and be sure you receive the book before class starts. Also, make sure the book can be returned if the course is cancelled; if not, you may want to wait to purchase the book until a week before the course is scheduled to start, checking first to see if it will meet.

OFF-CAMPUS LOCATIONS

HOWARD CITY

Panhandle Area Center
1401 S. Ensley Street — 231-937-7995

IONIA

MCC Ionia Center
250 E. Tuttle Road
Heartland Health Care Center
814 E. Lincoln — 616-527-0080

LAKEVIEW

Lakeview Wellness Center
423 N. Lincoln — 989-352-7510

SIDNEY

Montcalm Area Career Center
1550 W. Sidney — 989-328-6621

CAREER DEVELOPMENT & PERSONAL ENRICHMENT

REGISTRATION FORM

Registration begins **Aug. 2** and is required for all courses including those that are free. Duplicate this form as needed or print copies from MCC's website at www.montcalm.edu/career-development.

Name _____

Social Security # (last 4 digits only) _____ MCC ID # _____

Address _____

City/State/Zip _____

Please indicate how you can be contacted to notify you of a course change or cancellation.

Day phone(s) _____

Email address _____

Birthdate ____/____/____ If a minor: Parent's name _____

The school district in which you reside: _____

The following information is necessary for reports to state and federal agencies. Your cooperation in providing this optional information is appreciated.

Race: (check one)

White Black American Indian Hispanic
 Asian Other _____

Gender: (check one) Female Male

Course Title	Course Code	Session #	Cost
<i>Sample: Microsoft Word 2007</i>	XCIS 164	01	\$59
<i>Sample: Creating Web Pages-Ed to Go</i>	XCIS 106	46*	\$75

*See page 37 for Education To Go session numbers. TOTAL \$ _____

Mail the completed form with a check made payable to MCC to:

FALL 2018 REGISTRATION
MCC'S ASH TLC, 1325 YELLOW JACKET DRIVE, GREENVILLE, MI 48838

Montcalm Community College supports all state and federal laws that promote equal opportunity and prohibit discrimination.

Fall 2018 39



Montcalm Community College

2800 College Drive, Sidney, MI 48885-9723

www.montcalm.edu

989-328-2111

Nonprofit
U.S. Postage Paid
Sidney, MI 48885
Permit #2

ECRWSS

POSTAL CUSTOMER

LEARNING IS AGELESS!

Community members are invited to participate in MCC's Lifelong Learners. LLL was organized in 1998 to provide enrichment experiences for mature learners. Membership is open to those aged 18 and older. Visit www.montcalm.edu/LLL or call 989-328-1065 for more information.

ARTS AND CULTURE AT MCC

Montcalm Community College offers a variety of artistic and cultural opportunities, including musical presentations, theater productions, one-day trips, art exhibits, lectures and more. Visit www.montcalm.edu/arts-and-culture for a list of coming events.